



**COUNTY GOVERNMENT OF LAIKIPIA
NANYUKI MUNICIPALITY**

**NANYUKI MUNICIPALITY INVESTMENT PLAN
2024-2025**

DRAFT

TABLE OF CONTENTS

MUNICIPAL GENERAL INFORMATION.....5
ROAD AND AIR TRANSPORT.....5
NANYUKI MUNICIPALITY URBAN INVESTMENT PLAN.....10
1.INTRODUCTION.....10
2.CONTEXT.....10
3.INVESTMENT PRIORITISATION.....11
4.URBAN INVESTMENT PLAN AND BUDGET FY2024/2025.....12

DRAFT

LIST OF TABLES

TABLE 1: Disaster management- Urban Investment plan and budget FY 2024/25.....13
TABLE 1: Street lighting- Urban Investment plan and budget FY 2024/25.....14
TABLE 1: Solid Waste Management- Urban Investment plan and budget FY 2024/25.....15
TABLE 1: Sporting Facilities- Urban Investment plan and budget FY 2024/25.....16

DRAFT

LIST OF FIGURES

FIGURE 1:Nanyuki Municipality Boundaries.....	6
FIGURE 2:Land and land use	7
FIGURE 3:Health Facilities.....	8
FIGURE 4:Education Facilities.....	9

DRAFT

MUNICIPAL GENERAL INFORMATION

Laikipia County borders Samburu county to the north, Isiolo county to the North East, Meru county to the east, Nyeri county to the south east, Nyandarua county to the south, Nakuru county to the south west and Baringo county to the west. The county lies between latitudes 0°18" south and 0°51" and between longitude 36°11" and 37°24" east. It covers an area of 9,462 KM² and ranks as the 15th largest county in the country by land size. Map 1 shows the geographical position of Laikipia County in Kenya.

Nanyuki town derives its name from the Maasai community. From history, the Maasai had a fierce confrontation with the Purko community along the banks of one of the local rivers. Many Morans were slaughtered in the battle and the river came to be known as "Engare Nanyuikie" meaning, the river of blood and therefore, the name Nanyuki. The town is located in central Kenya, lying northwest of Mount Kenya along the A2. It was founded in 1907 by British settlers, some of whose descendants still live in and around the town. The settlers, mainly ex-British soldiers had acquired land in the outlying area and embarked on farming activities; mainly wheat growing and cattle and sheep rearing. These farming activities triggered mushrooming commercial establishments within the center, leading to steady growth. By 1930 the consistent growth and the economic potentials of both the center, and its outlying neighborhood had justified the construction of a railway line connecting the town to Nairobi. This was accomplished in 1954 under the then Aberdare Area council. In 1974 the center attained the status of a town council. Through the same steady growth, the town was elevated to its current status of a municipal council in 1982. Nanyuki has grown to be a military town with the main airbase of the Kenya Air Force, British Army (BATUK) and Kenya Army. Overtime, the expansion of the town has been rapid and unplanned. There is therefore a pressing need to control development and promote sustainable development in Nanyuki Municipality, being the urban with the largest population in Laikipia County according to the 2019 Census.

Road and air transport

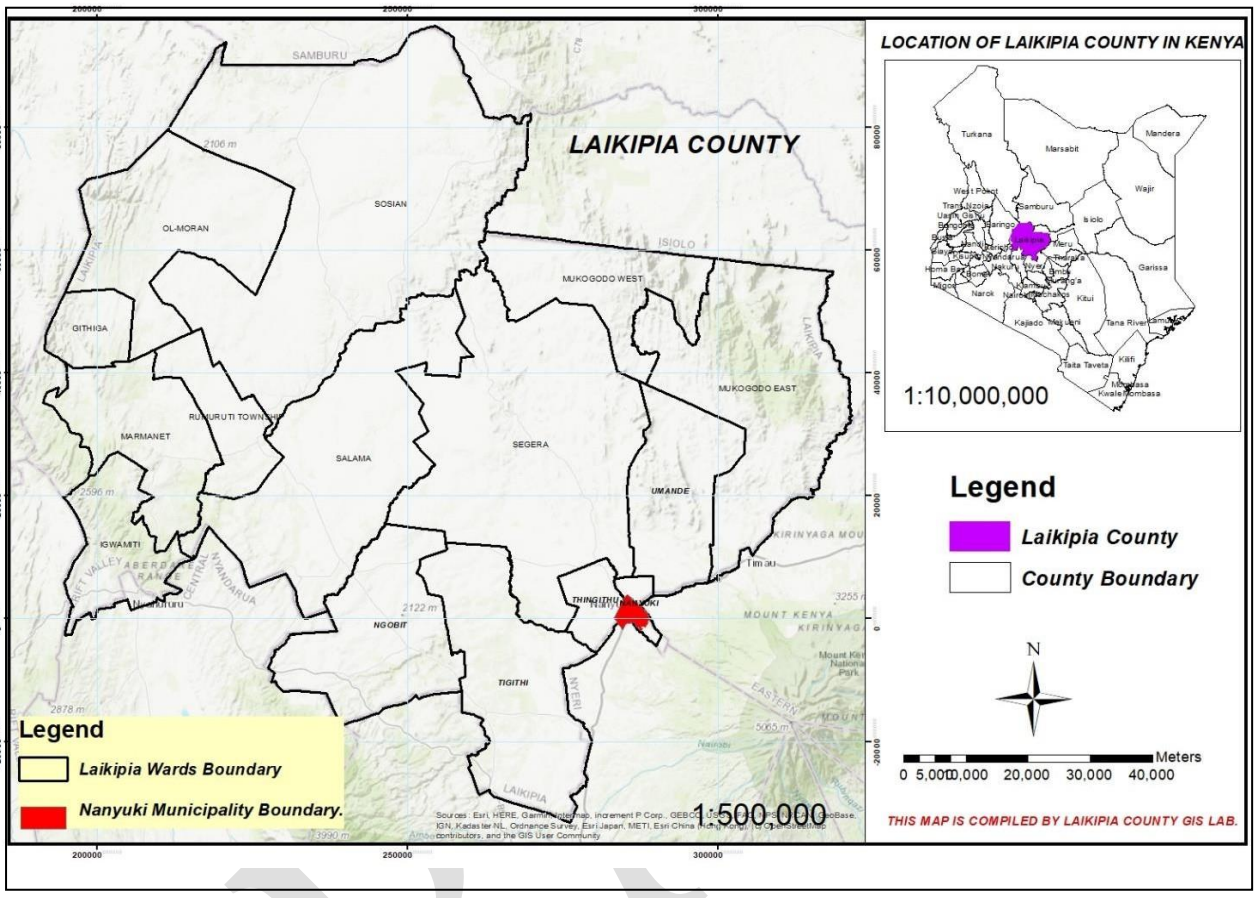
Nationally and regionally Nanyuki Municipality is accessed by the international (A2) road that passes through the town from Nairobi to Isiolo. Nanyuki can be accessed at a distance from Isiolo, Meru, Nyeri, Maralal and Nyahururu. It can therefore be fairly accessed from a number of towns within its regional context due to its centrality. This centrality gives Nanyuki town prominence and therefore can act as a good economic hub for the south-western region of the country.

Approximately 60% of the roads in the CBD are tarmacked. Most roads in the peri urban are unclassified roads. Most of the roads are of murrum standards hence impassable during rainy seasons. Other sections of roads have been encroached making them narrow.

Nanyuki Municipality is served by air transport. The Nanyuki Airstrip is located approximately 8 kilometers from Nanyuki town center and is a government-owned, privately leased airfield, serving private and commercial air operators. Nanyuki airstrip has a single asphalt runway which measures 1,200 meters (3,900 ft) in length. With only one landing strip, the airfield handles mostly small light single engine aircraft and some larger twin aircraft. Most traffic through Nanyuki is routing from Nairobi, carrying tourists to Mara Serena Airport, Samburu airport, Laikipia and Meru. With the growing demand, for air transport, there is a need for expansion and development of the airport to promote tourism as well as international trade of the horticulture and livestock products. The airstrip is currently undergoing a massive facelift by the Kenya Airports Authority to increase its capacity.

Laikipia Air Base located approximately 8 km west-northwest of the Municipality was established in 1974 as Nanyuki Air Base has its own airfield strictly used for military aircrafts.

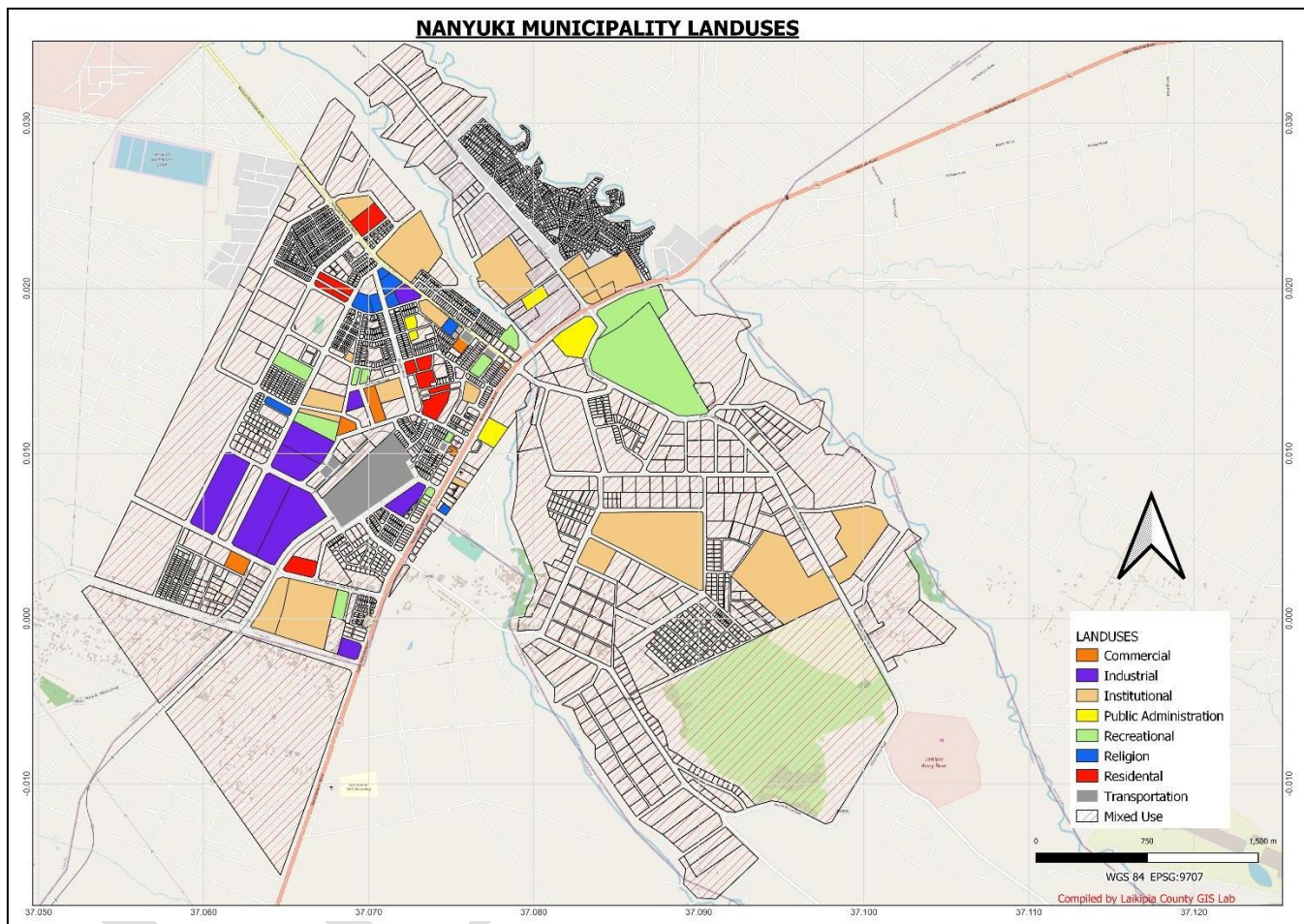
Figure1: Nanyuki Municipality Boundaries



Location Context of Nanyuki Municipality

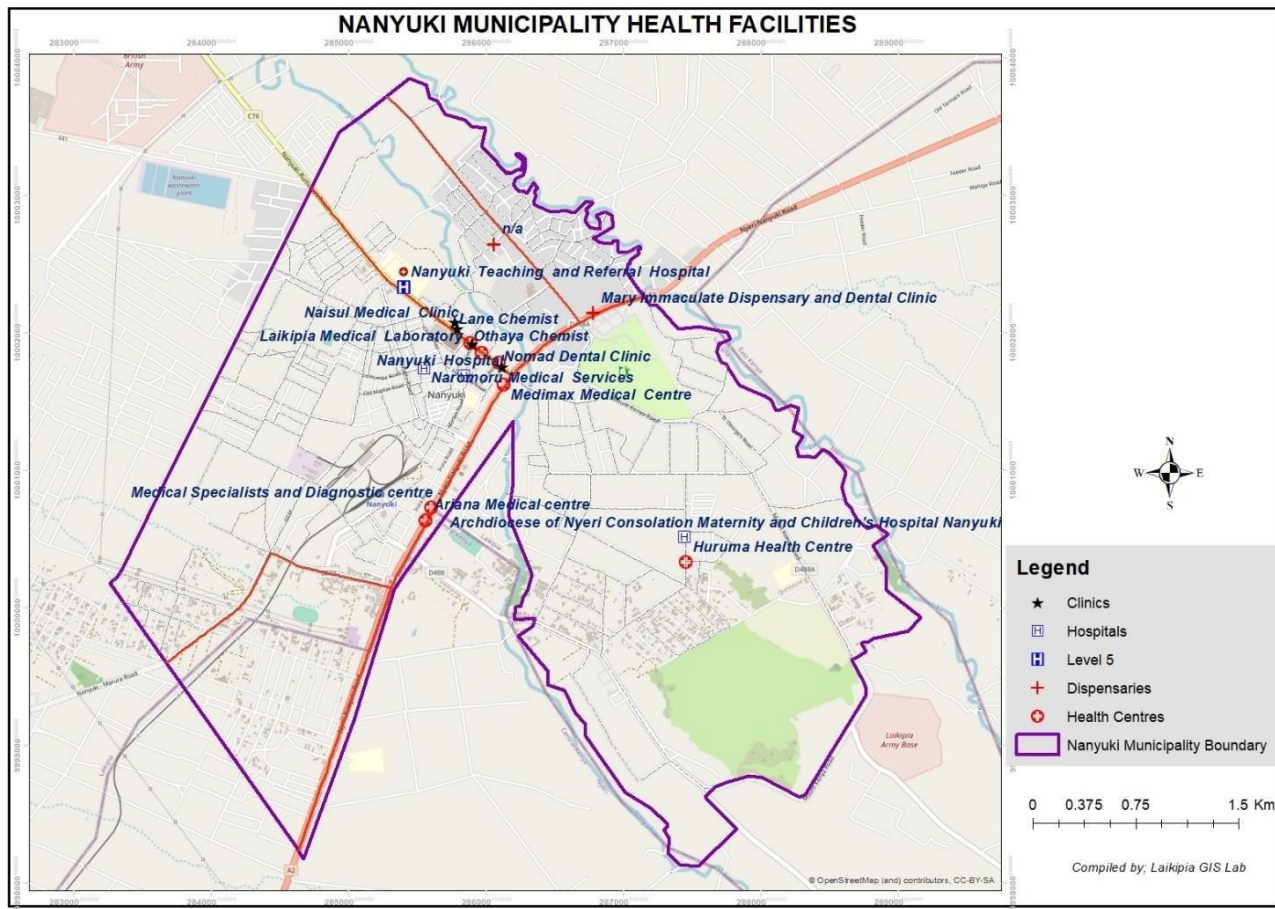
Source: Department of Lands

Figure 2. Land and Land use



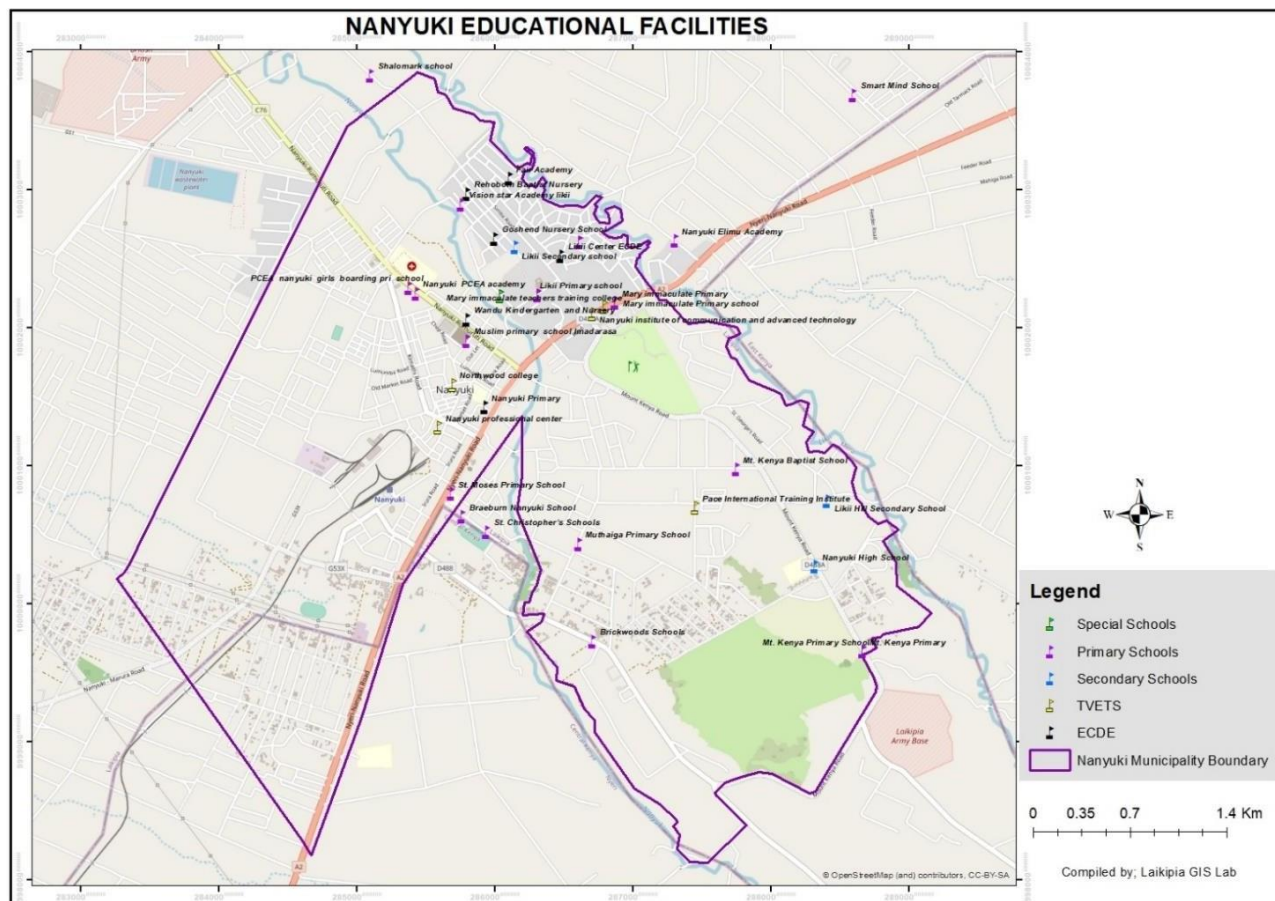
Nanyuki Municipality Land Uses
Source: Department of Lands

Figure 3. Health facilities



Source: Department of Health Service

Figure 4. Education facilities



Source: County Director of Education/ Department of Education, Gender, Culture and Social Services

NANYUKI MUNICIPALITY URBAN INVESTMENT

1. INTRODUCTION

Nanyuki Municipality Urban Investment plan seeks to inform the financial planning through public participation designed to develop an investment strategy to achieve provision of essential services as delegated by the County Government of Laikipia through Gazette Notice No.159878, Urban Areas and Cities Act and Nanyuki Municipality Charter.

During the public participation held on 3rd October 2024, the Nanyuki Municipality residents prioritized projects/programs appearing in Tables 1,2,3, and 4 respectively.

2. CONTEXT

a) Objectives as identified in the Five-Year urban Institutional Development Plan.

- ✓ Provision of legal frame work for effective management of the municipality;
- ✓ Enhance connectivity in the municipality;
- ✓ Improve solid waste management;
- ✓ Enhance and development urban economic infrastructure i.e. markets and stalls; and
- ✓ Improve preparedness on fire and disaster management.

b) Activities already undertaken

- ✓ Municipal charter has been drawn and forwarded to the county assembly for approval;
- ✓ Municipal Administration is in place having appointed the interim municipal manager and other support unit/staff deployed.
- ❖ Finance and budgeting;
- ❖ Social Development Officer;
- ❖ Procurement officer;
- ❖ Town planner;
- ❖ Environment officer;

The above officers have been seconded to address and manage issues of Nanyuki municipality in their respective departments.

3. INVESTMENT PRIORITIZATION

a) Prioritization as identified by the urban Board

- ✓ Solid waste management;
- ✓ Preparedness on fire and fire disaster;
- ✓ Urban planning and policy formulation;
- ✓ Legal framework for enforcement and implementation;
- ✓ Economic infrastructure i.e. markets and other stalls;

b) Priorities as identified by county government and assembly

- ✓ Solid waste management ;
- ✓ Preparedness on fire and disaster management;
- ✓ Legal framework for enforcement and implementation;
- ✓ Adherence to the procurement procedures; and
- ✓ Urban planning

Challenges

- ✓ Inadequate transport systems;
- ✓ Lack of legal framework in terms of policy as related to urban planning and management;
- ✓ Lack of waste management policies;
- ✓ Lack of development control guidelines and urban approvals;
- ✓ Lack of master plans and controlled development management;
- ✓ Lack of proper waste disposal collection centres in Nanyuki town;
- ✓ Lack of storm water drainage system and policy.

4. URBAN INVESTMENT PLAN AND BUDGET FY2024/25

- **Disaster Management**

The purpose of the disaster management plan is to identify disaster prone areas, protect inhabitants of the planning areas from disasters and explore available options for early warning systems. It's also takes into consideration the natural hazards such as flash floods within the informal settlements and forest fires within the planning area. Nanyuki exhibits various types of disasters both recurrent and potential. These types of disaster are namely; fires and drought.

- **Solid Waste Management**

By provisions in the Constitution of Kenya (2010), every person is entitled to a clean and healthy environment and has a duty to safeguard and enhance the environment. However, the generation of wastes continues to confront man in his living environment. This is as a result of anthropogenic activities which generate waste, especially under conditions of urbanization. The common waste being solid waste, that potent severe impacts on the environment, thus threatening quality of life. Unfortunately, the rise in solid wastes generation has not necessarily been followed by an increase in the capacity to effectively manage the emerging challenges.

The problem of generation of huge quantities of solid wastes is likely to become more confounding given that municipalities have a rapidly growing population. Currently, about three quarters of the solid waste generated in the municipality has a high likelihood of being uncollected or even unprofessionally handled.

With market/urban centres associated with lack of adequate basic waste management facilities, environmental pollution threatens to enhance chances of poor health among the population. The rapidly increasing waste generation will lead to complex waste streams, poor waste management, and deterioration of living conditions.

- **Streetlighting**

This falls majorly under Urban Development where installation ,repair and regular maintenance of is done to ensure there is adequate lighting of the streets of Nanyuki Municipality.

Impacts

- Reduced crime rates.
- Improved personal security for community members.
- Increased business activities leading to a 24-hour economy.
- Reduced accidents due to proper lighting, which improves visibility.

Sporting Facilities

Nanyuki Municipal Stadium that was recently rehabilitated by the County Government provides a venue for sporting activities such as football, athletics, tournaments, cycling and martial arts for the resident and schools' sports activities. Further, the municipality has a Social Hall to provide community services for its residents. The Municipality has a golf Course within Nanyuki Sports Club and a Central Park within the CBD for recreational activities.

